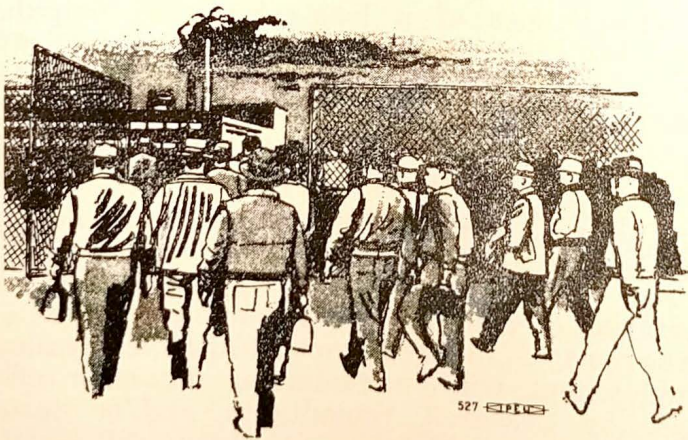


The
Newark
Full
Employment
Project



Background

Today Newark faces grave economic and social problems. City-wide unemployment is close to 6 per cent, and among nonwhites the rate of unemployment is double that of whites. As of 1957, about one-half of all the residential blocks needed clearance, rehabilitation or conservation. In the last two decades the white population has sharply declined while the Negro and Puerto Rican population has more than doubled. Today it is estimated that between 40-50 per cent of Newark's population is nonwhite. This dual migrational trend generates problems in jobs, housing and education. The employment pattern in Newark has changed radically since World War II. Until then, Newark's industrial enterprises employed many unskilled and semi-skilled laborers. However, today while an ever larger percentage of the city's population is unskilled or semi-unskilled, automation and other factors have reduced the availability of such jobs. Unfortunately while municipal problems have increased, Newark's government has failed to respond to the interests of its changing constituency. In the three major fields of employment, education, and housing, Newark is losing ground because of the neglect and lack of imagination by city officials. A new approach to Newark's problems is needed.

Purpose of Project

The Newark Full Employment Project is an attempt to establish a new and vigorous grass roots movement around the issue of employment. The project will be undertaken in a section of the Clinton Hill area of the South Ward where the existence of a long-established neighborhood association, the Clinton Hill Neighborhood Council will help reach the people. Clinton Hill currently faces serious problems including the projected Clinton Hill Light Industrial Project and new expressway links which could displace 5,000 and 7,500 families respectively, mostly Negroes.

The following areas have been selected for exploration by the project:

1) Analysis of existing employment programs

Programs of all governmental agencies dealing with employment will be evaluated for their effectiveness by research consultants and/or tested by Clinton Hill residents (with technical assistance). When found ineffective recommendations for improvement or modification will be made. The analysis of current programs by researchers will include studies based on the current skills of the unemployed and their potential for retraining and community needs.

2) Analysis of city services

After research work, wherever it is evident that a city service is inadequate to the job which needs to be done, programs will be developed for the expansion of existing services or the initiation of new ones along with manpower and training require-

ments. City services to be analyzed will include among others, education, welfare, and city house-keeping operations.

3) **Employment potentials in renewal**

This is a vital element in the Newark Full Employment Project. It will incorporate many of the findings related to city services, but will range far more broadly to include the employment potential of all improvements which are needed in the community.

4) **The campaign against discrimination**

Discrimination in employment in Newark is so important that it is an integral part of the project's program. However, leadership in the campaign against discrimination will probably come from other groups which are already involved in this struggle. It should be emphasized, however, that the objective of the project is to help eliminate unemployment through a positive program for increasing employment opportunities, as well as eliminating discrimination.

5) **Employment potential in the Newark economy**

An attempt will be made during the summer to develop a total picture of Newark's manpower needs and resources. This will include an analysis of the private as well as the public economy and its employment potential. Means for achieving full employment within the framework of the Newark and national economies will be explored.

Organization

There are four major groups participating in the project.

- 1) The Newark Committee on Full Employment (NCOFE) consists of about two dozen trustees. These trustees come from many parts of the city and are affiliated with various labor unions, civil rights groups, neighborhood and civic associations, and educational institutions. NCOFE sets overall policy for the project and assists in raising funds and enlisting community support.
- 2) Students for a Democratic Society (SDS) is an active movement of students and young adults, organized in campus chapters or independently, and sharing a common commitment to participatory democracy. Last year SDS formed a project to send volunteers into various areas of the country which have economic problems. This project is based on the assumption that greater public attention and action should be focused on the nation's economic problems. About one dozen SDS volunteers are now in Newark and living with families in the Clinton Hill area. These volunteers come from all parts of the country and have diverse social, economic, and educational backgrounds. It is expected that the project will last

several years, and some of the volunteers will stay for the duration of the project.

- 3) The Clinton Hill Neighborhood Council is a neighborhood group which was founded nine years ago. It concerns itself with education, housing, and generally, any issue which might affect the residents of the Clinton Hill area. The CHNC functions through block branches and standing committees. Through these groups the volunteers will contact the residents of the project area.
- 4) The National Committee on Full Employment is committed to working in communities to dramatize the demands for achieving full employment through meeting community needs and through other means. One of the criteria used by the Committee for selecting a community to work in is the existence of an active community organization made up largely of individuals faced with the actual or potential threat of unemployment. The Committee is contributing trained research personnel to the Newark project.

Finances

The project is partially financed through funds made available by the National Committee on Full Employment. These funds go mainly for research. However, since the project will be of immediate benefit to Newark, the trustees of the Newark Committee on Full Employment have undertaken to raise \$1500 locally. This money will mainly be used for operating expenses.

OFFICERS

THOMAS F. EDWARDS	Co-Chairman
STANLEY B. WINTERS	Co-Chairman
ROSE HEYMAN	Treasurer
JOAN WALDMAN	Corresponding Secretary
GAIL LISSEK	Recording Secretary
WARREN GROVER	Executive Director

Trustees

Donald Dworkin	Duke Moore
Thomas F. Edwards	Felix-Ramon Neals
Warren Grover	Louise Patterson
Arthur Heyman	Ray Proctor
Rose Heyman	Carletta Ryan
Gail Lissek	Joan Waldman
Ricky Lissek	Fred Waring
Elmira Logan	Charles Whigham
Al Lowenthal	Derek T. Winans
Bernard Moore	Stanley B. Winters

PROJECT OFFICE

716 Bergen Street Tel. 243-7803 Newark 8, N. J.